

# COPPERWOOD

REAL ESTATE

Delivering Innovative Real Estate Solutions

SOLD

## 14001 Ridgedale Drive Minnetonka, MN



### General Overview

Excellent exposure on the SE corner of Interstates 394 and 494 in Minnetonka. Previous tenant was a clinic for Health Partners. Each floor is approx. 8000 sq.ft.

### Property Specs

- Location, Location, Location
- Previous use was Medical
- Excellent condition
- Between Ridgedale and Wayzata on 394

952.392.1310  
www.copperwood-realestate.com

COPPERWOOD  
REAL ESTATE

# COPPERWOOD

REAL ESTATE

Delivering Innovative Real Estate Solutions

## Property Photos



View from the west

# COPPERWOOD

REAL ESTATE

Delivering Innovative Real Estate Solutions

## Property Photos



Covered Parking

# COPPERWOOD

REAL ESTATE

Delivering Innovative Real Estate Solutions

## Property Photos



Covered Parking

# COPPERWOOD

REAL ESTATE

Delivering Innovative Real Estate Solutions

## Property Photos



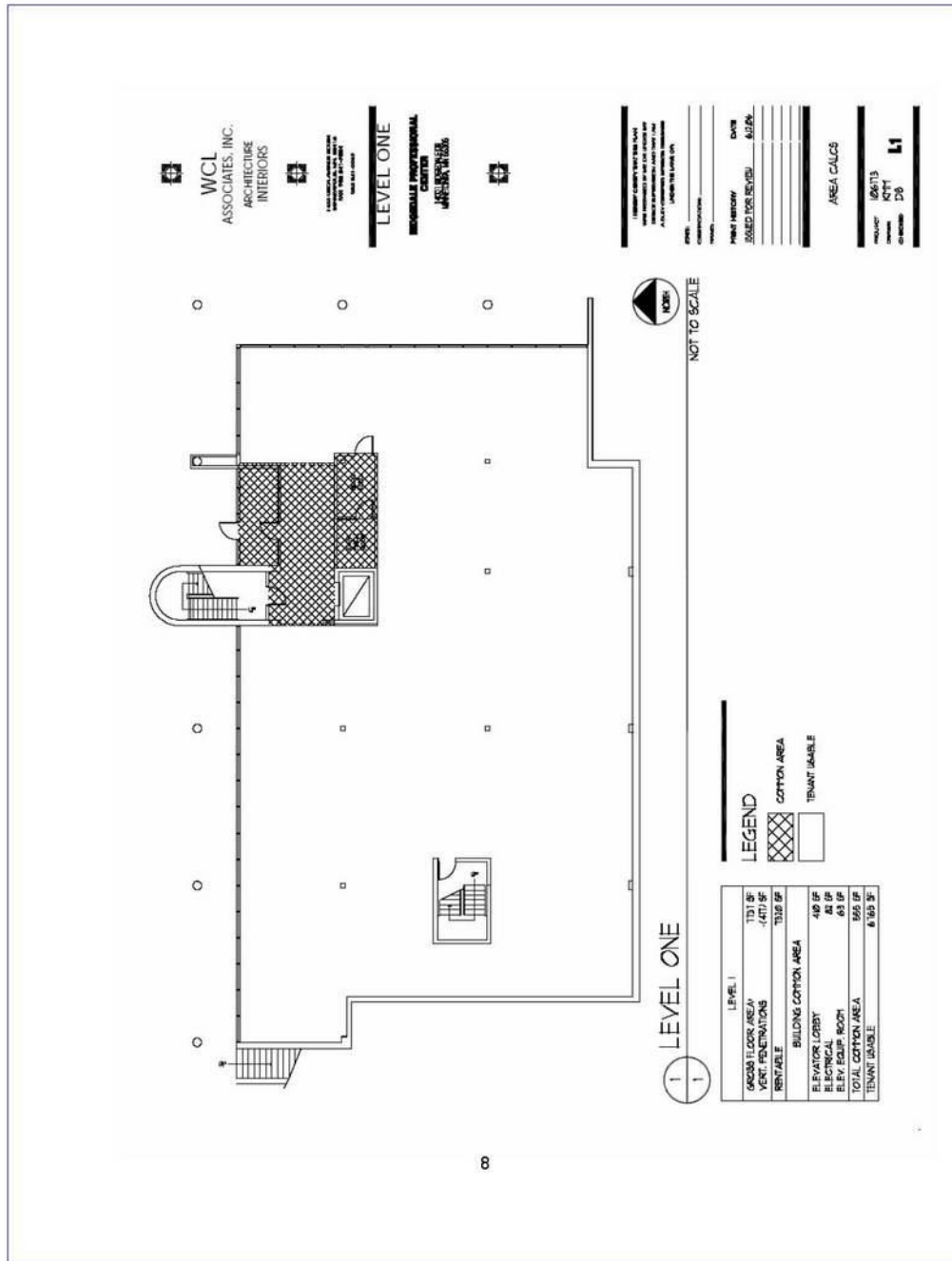
View from the north

# COPPERWOOD

REAL ESTATE

Delivering Innovative Real Estate Solutions

## Property Photos



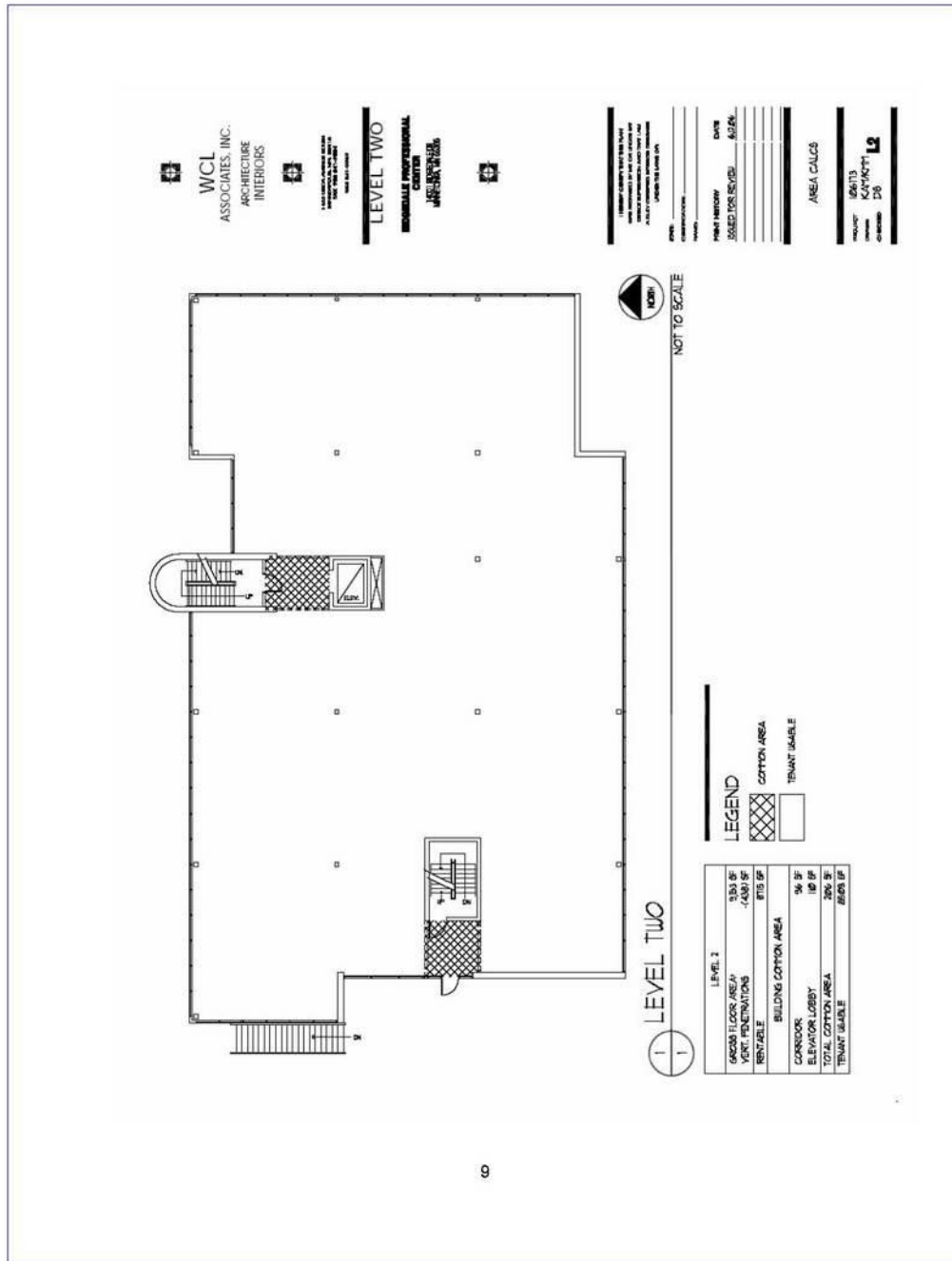
First floor

# COPPERWOOD

REAL ESTATE

Delivering Innovative Real Estate Solutions

## Property Photos



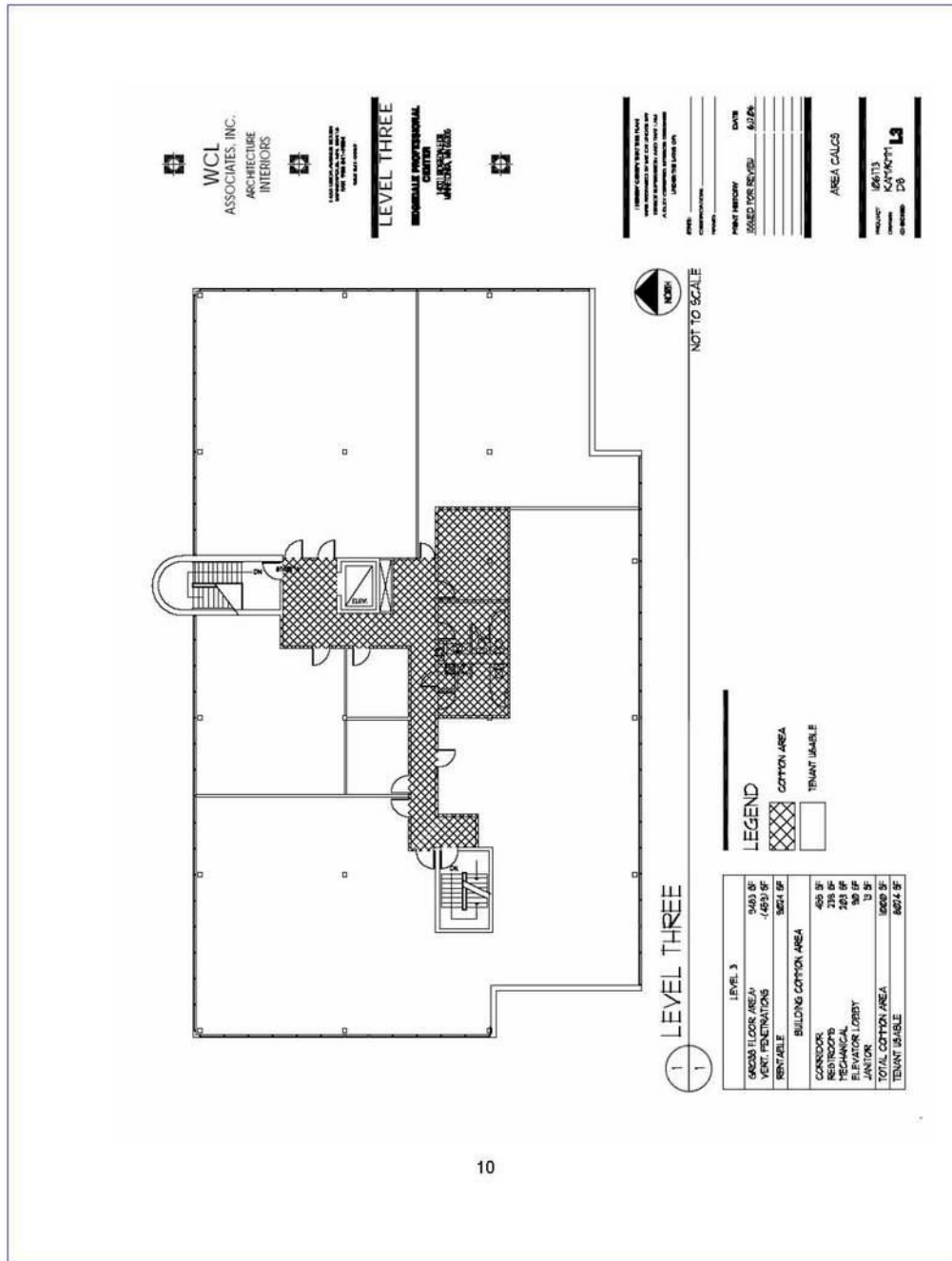
Second Floor

# COPPERWOOD

REAL ESTATE

Delivering Innovative Real Estate Solutions

## Property Photos



Third floor

